
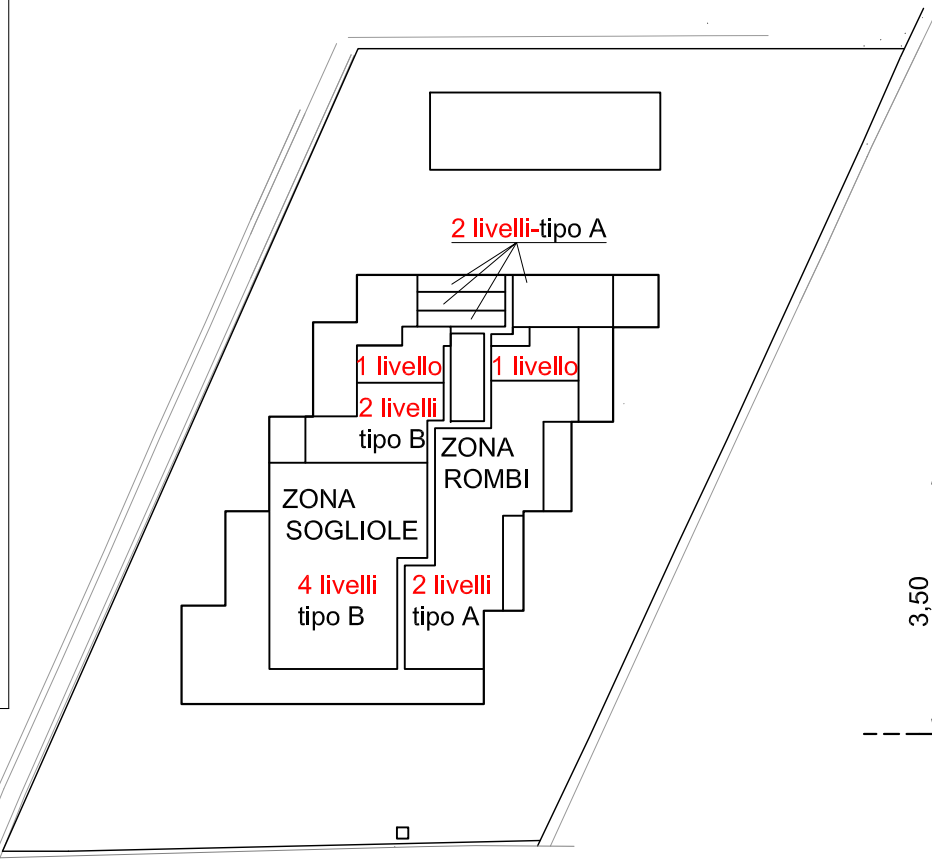


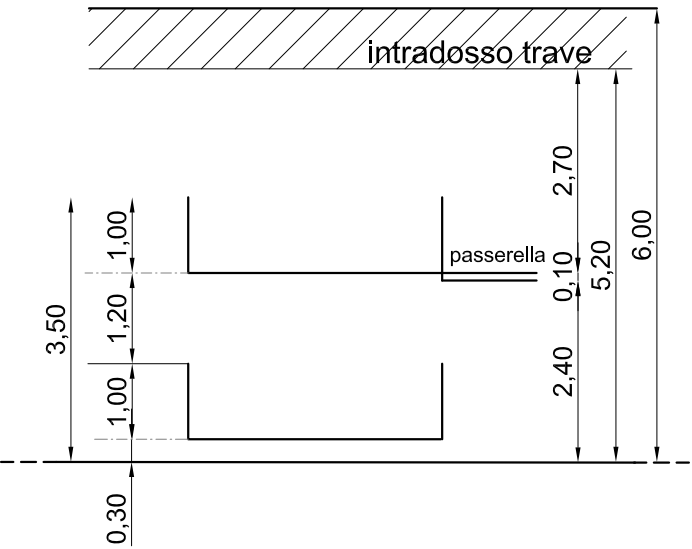
PROGETTO PER LA RIQUALIFICAZIONE E L'AMPLIAMENTO
DELL'ATTIVITA' ESISTENTE DI ITTICOLTURA
VERIFICA DI ASSOGGETTABILITA' A V.I.A.
art. 19 Dlgs.152/2006 e art.48 LRT 10/2010

RICHIEDENTE: IGF Società Agricola s.r.l. sede legale: Loc. Vignarca, n.24 - 57025 Piombino (LI) P.Iva - C.F.: 01653590537				
OGGETTO: CAPANNONE A - CAPANNONE B SCHEMI VASCHE DI ALLEVAMENTO E TEMPERATURE ACQUA			DATA OTTOBRE 2022	TAV. P7
Il gruppo di progettazione: Arch. Cristina Guerrieri V. Lombroso 64/A-Piombino tel. 338 8677521 cristina.guerrieri@tiscali.it			REV 21/10/2022	SCALA: 1:2000 1:100
Biol. Paolo De Marzi Biol. Diogo Nunes Rosado Arch. Francesca Guerrieri			NOME P7_20221021_schema vasche	
Arch. Roberto Scateni P.I. Roberto Simoncini Geol. Luca Finucci Geom. Gabriele Graziani				

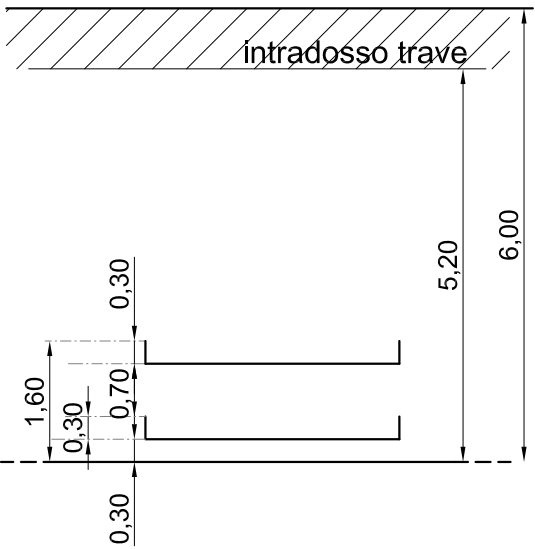


CAPANNONE B - SCHEMI LIVELLI VASCHE

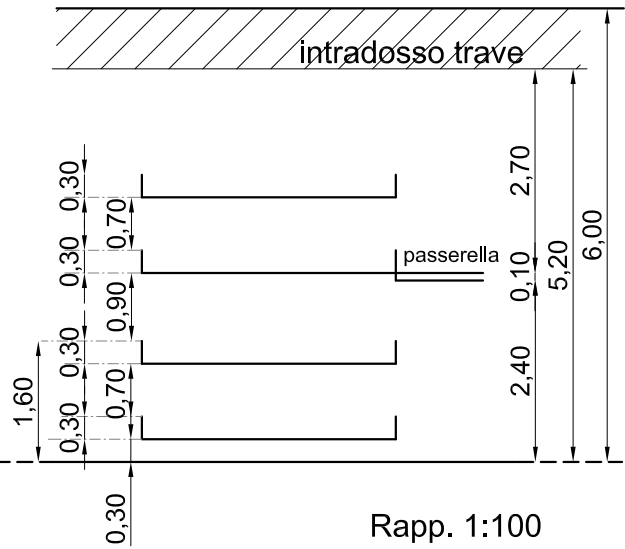
2 LIVELLI -tipo A



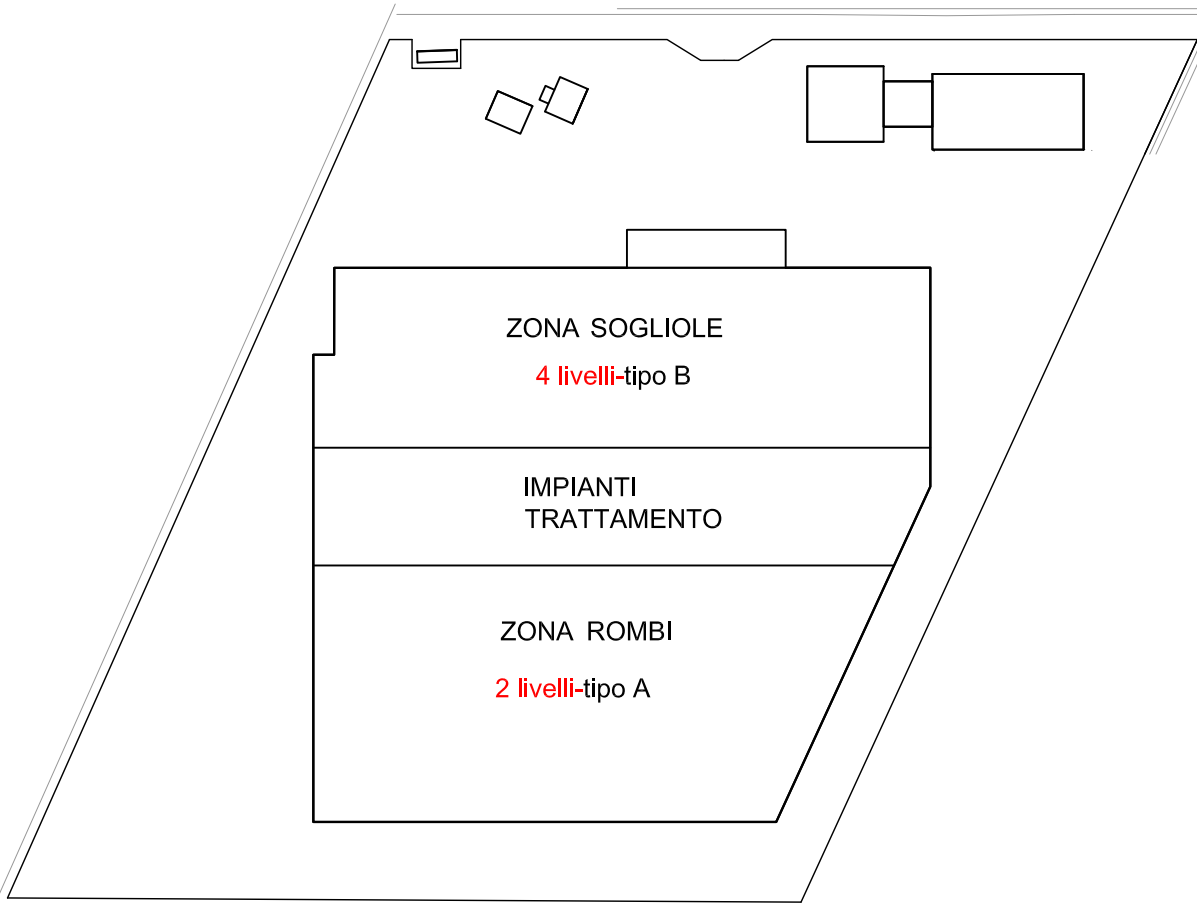
2 LIVELLI - tipo B



4 LIVELLI - tipo B

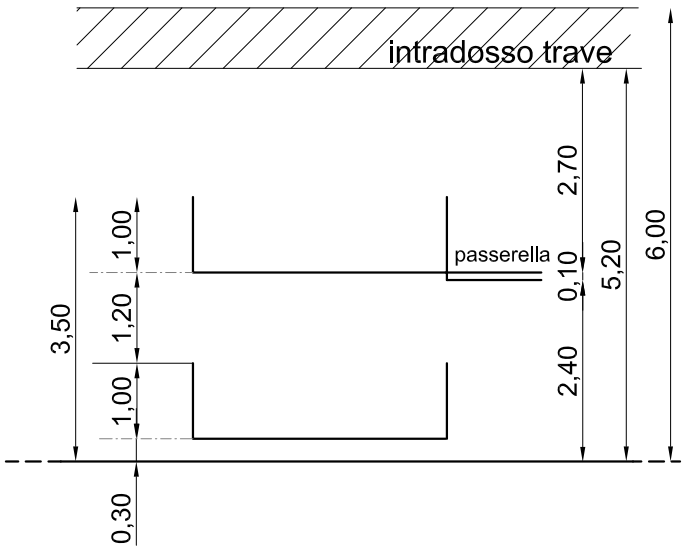


Rapp. 1:100

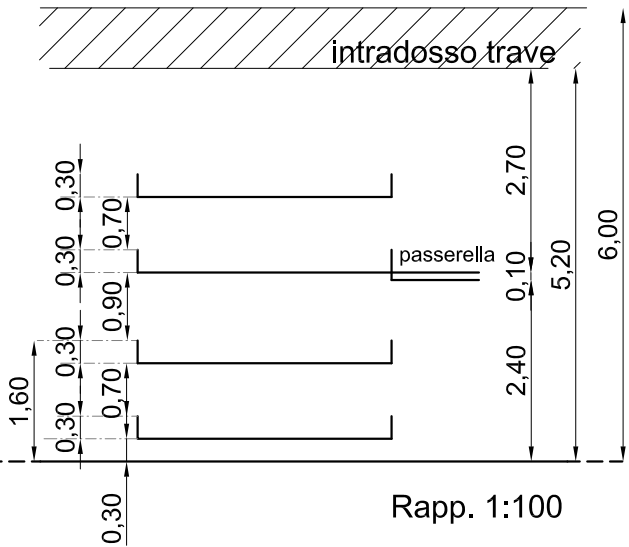


CAPANNONE A - SCHEMI LIVELLI VASCHE

2 LIVELLI -tipo A

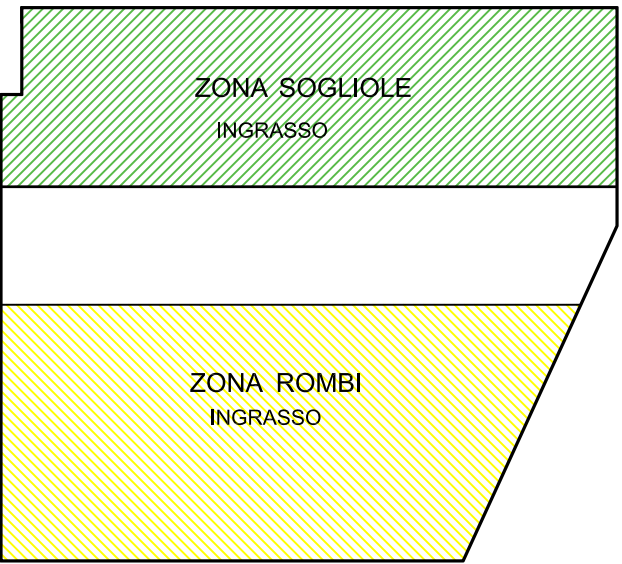


4 LIVELLI - tipo B



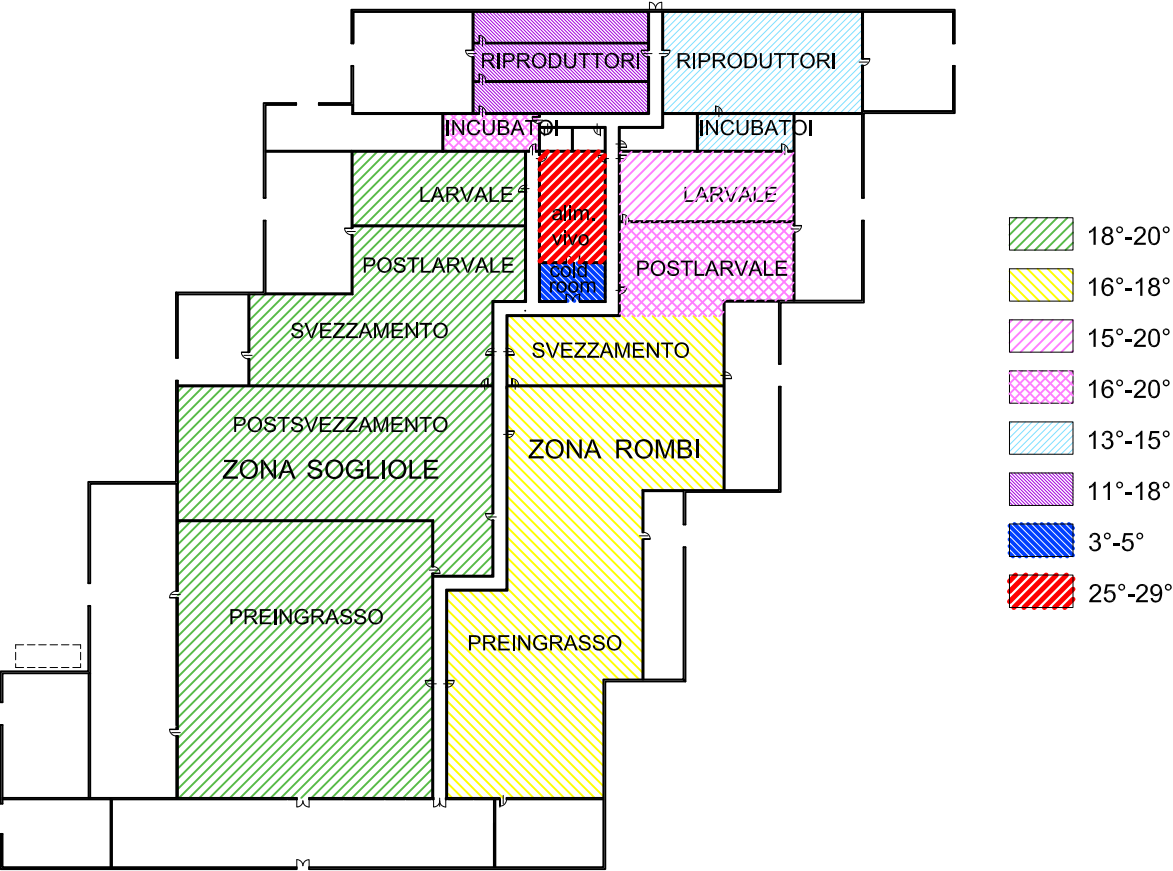
Rapp. 1:100

CAPANNONE A - TEMPERATURE IN VASCA



18°-20°
16°-18°

CAPANNONE B - TEMPERATURE IN VASCA



18°-20°
16°-18°
15°-20°
16°-20°
13°-15°
11°-18°
3°-5°
25°-29°